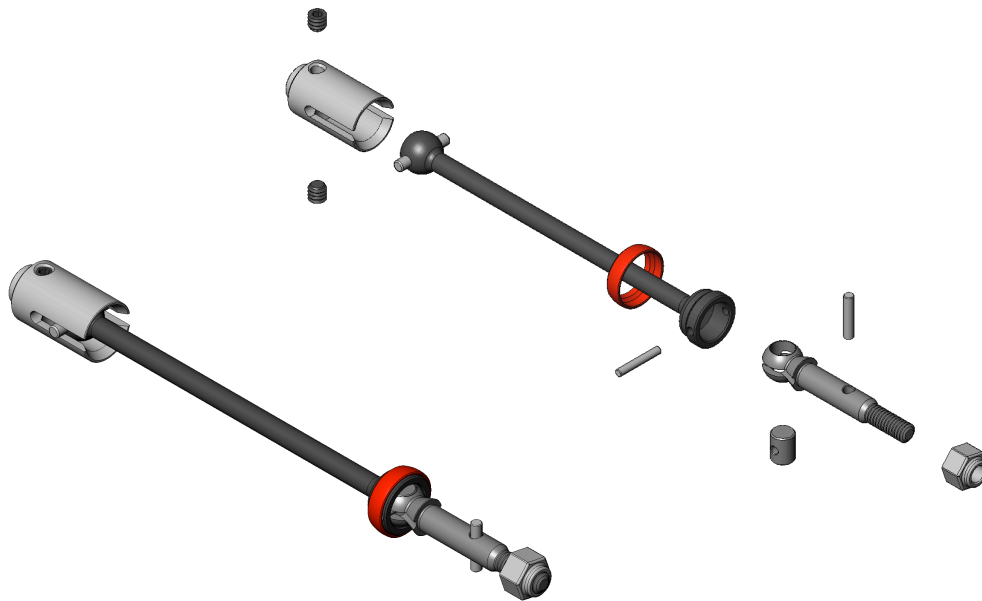


Moore's Ideal Products, LLC
830 W. Golden Grove Way
Covina, CA 91722
626-339-9007

PRESS RELEASE
Website: www.miponline.com

MIP NEW C-CVD™ DESIGN

**NO THREAD LOCK, NO SET SCREWS TO HOLD IN THE COUPLING PINS!
JUST OUR NEW RED CAPTURE RING.**



COVINA, CA, USA - February/March 2009 - Moore's Ideal Products LLC, manufacturer of the top selling, World Famous MIP CVD™ Kit, announces the release of the 1/10 scale MIP C-CVD™. In launching our new design, we will be updating some of our standard 1/10 CVD™ Kits with the new 1/10 C-CVD™ Kits. All updated kits will have a new part number. The new MIP C-CVD™ has, no thread lock, and no tiny set screws. Just insert the coupling pin through the bone and coupling/axle assembly then slide our **NEW RED C-CVD™ Capture Ring** over the threads on the bell of the bone and screw it on. **IT'S EASY!**

Moore's Ideal Products, LLC

830 W. Golden Grove Way
Covina, CA 91722
626-339-9007

It's time to enter **NEW PART NUMBERS** into your system. New complete descriptions will help you help your customers.

PART #1219 is replaced with: **#08123 MIP C-CVD™ Kit - Stampede XL-5 3605, Stampede VXL 3608, Rustler XL-5 3705, Rustler VXL 3708** Retail \$42.50

Replacement parts for kit #08123:

#08124 C-CVD™ Bone - All Elec. Rustler & Stampede	\$8.00
#08114 C-CVD™ Axle - Slash, All Rustler & Stampede	\$8.00
#08115 C-CVD™ Outdrive Cup - Slash, All Rustler & Stampede	\$10.00
#08107 C-CVD™ Re-Build Kit 3/16"	\$5.00

PART #1655 is replaced with: **#08135 MIP Spline CVD™ Kit - E-REVO #5605 & #5608, REVO 3.3 #5308 & #5309, T-MAXX 3.3 #4908** Retail \$65.00

Replacement parts for Kit #08135:

#08136 Bone Spline/Long, E-REVO #5605, REVO 3.3 #5308 & #5309, T-MAXX 3.3 #4908	\$15.00
#08137 Drive Hub 6mm, E-REVO #5605, REVO 3.3 #5308 & #5309, T-MAXX 3.3 #4908	\$ 8.00
#08143 Axle MIP Spline CVD™ E-REVO #5605, REVO 3.3 #5308 & #5309, T-MAXX 3.3 #4908	\$10.00
#08111 MIP C Drive Female Bone	\$15.00
#1147 MIP CVD™ Coupling Rebuild Kit 1/8, MT & 3.3 Kits	\$12.95

#08138 MIP Spline Center CVD™ Kit - E-REVO #5605 & E-REVO Brushless #5608 Retail \$65.00

Replacement parts for Kit #08138:

#08139 Male Bone Spline Short, E-REVO #5605, E-REVO #5608	\$15.00
#08137 Drive Hub 6mm, E-REVO #5605, REVO 3.3 #5308 & #5309, T-MAXX 3.3 #4908	\$ 8.00
#08136 Bone Spline/Long, E-REVO #5605, REVO 3.3 #5308 & #5309, T-MAXX 3.3 #4908	\$15.00
#08111 MIP C Drive Female Bone	\$15.00
#1147 MIP CVD™ Coupling Rebuild Kit 1/8, MT & 3.3 Kits	\$12.95

Moore's Ideal Products, LLC

830 W. Golden Grove Way
Covina, CA 91722
626-339-9007

PART #1550 is replaced with: #08125 MIP C-CVD™Kit - RC10B4 #9034,
RC10B4 FT #9035, RC10B4 RS #9037 Retail \$32.50

Replacement parts for Kit #08125:

#08126 C-CVD™ Bone RC10B4 #9034, RC10B4 FT #9035, RC10B4 RS #9037	\$8.00
#08141 C-CVD™ Axle All B4 & T4 Associated	\$8.00
#08107 C-CVD™ Re-Build Kit 3/16"	\$5.00

PART #1574 & #1575 is replaced with: #08129 MIP C-CVD™Kit RC10GT2 #7080,
RC10GT2 # 7092 Assoc. Retail \$35.00

Replacement parts for Kit #08129:

#08130 C-CVD™ Bone RC10GT2 #7080 & RC10GT2 RS #7092 Assoc.	\$8.00
#08142 C-CVD™ Axle RC10GT2 #7080 & RC10GT2 RS #7092 Assoc.	\$8.00
#08107 C-CVD™ Re-Build Kit 3/16"	\$5.00

PART #1200 is replaced with: #08131 MIP C-CVD™Kit - XXX-CR #LOSA0032,
XXX #LOSA0029, & XX-4 #LOSA0011 Retail \$32.50

Replacement parts for Kit #08131:

#08132 C-CVD™ Bone, XXX-CR #A0032, XXX #A0029, & XX-4 #A0011	\$8.00
#1042 Axle, for Losi Cars & Trucks	\$8.00
#08107 C-CVD™ Rebuild Kit, 3/16	\$5.00

PART #1201 is replaced with: #08133 MIP C-CVD™Kit - XXXT-CR #A-0073,
XXXT-MF #A-0075 Retail \$35.00

Replacement Parts for Kit #08133:

#08134 C-CVD™ Bone, XXXT-CR #A-0073, XXXT-MF #A-0075	\$8.00
#1042 Axle, for Losi Cars & Trucks	\$8.00
#08107 C-CVD™ Rebuild Kit 3/16	\$5.00

Sue Schlueter, Sales
Moore's Ideal Products, LLC
sue@miponline.com
402-643-6350 ph
866-599-5044 fx