



Valve Chart



.003" - Green



.005" - Blue



.007" - Matte

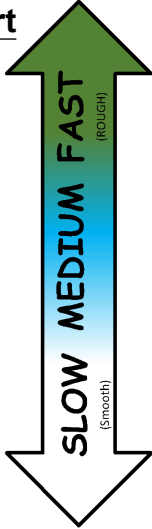
Tuning Valves



.004" Tan
(Gap)



.010" Brown
(Neutral)



SLOW MEDIUM FAST

Cut & Tape to
your Toolbox!

MIP Bypass1™

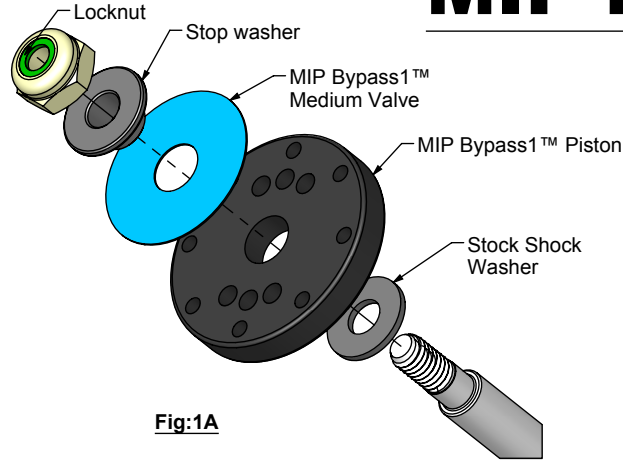


Fig:1A

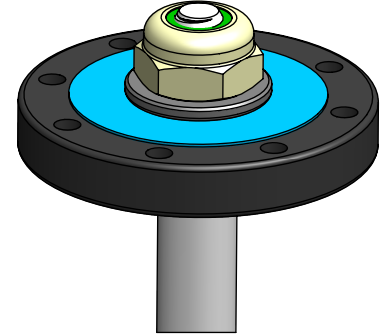


Fig:1B
Initial Setup

Installation:

1. Disassemble standard shocks and remove stock pistons. Clean all parts thoroughly!
2. Follow the "Medium" diagrams above to assist you in assembling your MIP Bypass1™ Pistons. Place the MIP Bypass1™ Piston followed by the blue valve then stop washer.
3. Secure the assembly using the Locknut.
4. Re-assemble your shocks with MIP Bypass1™ Piston system along with your standard oil & piston hole setup, springs, & ride height you ran previously. Get ready for a new RC car experience! Be sure to experiment with all the MIP Bypass1™ valves included in your kit.



www.miponline.com

Infinite Adjustability:

Because MIP Bypass1™ valves come in many different thicknesses, the dampening characteristics are limitless! If you find that the Medium adjustment rebounds too quickly but the "Slow" setting is too slow you can stack "Gap Valves" to fine tune the dampening! You can add a .004" Tan Valve below the "Fast" Valve and produce dampening between "Fast" & "Medium" dampening (See Fig:2). Other valves can be used too! Experiment with your own setups and see where MIP Bypass1™ Valve Technology can take YOU!

For more information & Setups:

please visit www.miponline.com

Recommended MIP Tools for assembly and spare hardware

- #9702 MIP Nut Driver Wrench, 5.0mm
- #9703 MIP Nut Driver Wrench, 5.5mm
- #18400 MIP Bypass1™ Pistons, 6-Hole Set, 16mm, Mugen 1/8th
- #18401 MIP Bypass1™ Pistons, 6-Hole, 16mm (2)
- #18410 MIP Bypass1™ Pistons, 8-Hole, 16mm, Mugen 1/8th
- #18411 MIP Bypass1™ Pistons, 8-Hole, 16mm (2)
- #18415 MIP Bypass1™ Tuning Valves Kit, 1/8th Scale

Thank you for purchasing MIP products! We here at MIP pride ourselves in quality and innovation. Hundreds of man hours were spent developing and track testing our MIP Bypass1™ product line. We designed and built custom dynos to precisely check each stage during development to assure race ready kits. As you begin to install your MIP Bypass1™ Piston, you are entering into a new level of RC car performance, developed and designed by MIP racers. Once again, thank you! Eustace Moore Jr.: Founder of MIP 1978

01-592

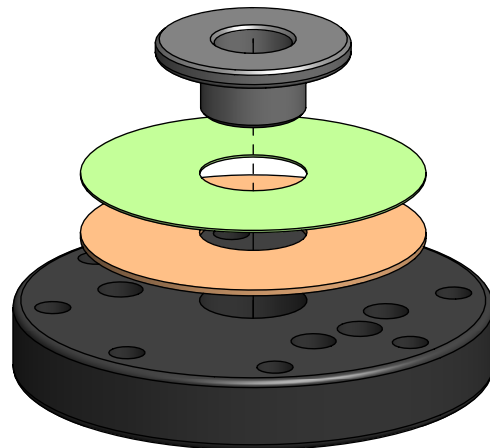


Fig:2
Stacked Valve Setup

©2018
Moore's Ideal Products, LLC
830 W. Golden Grove Way
Covina, CA 91722