



www.miponline.com

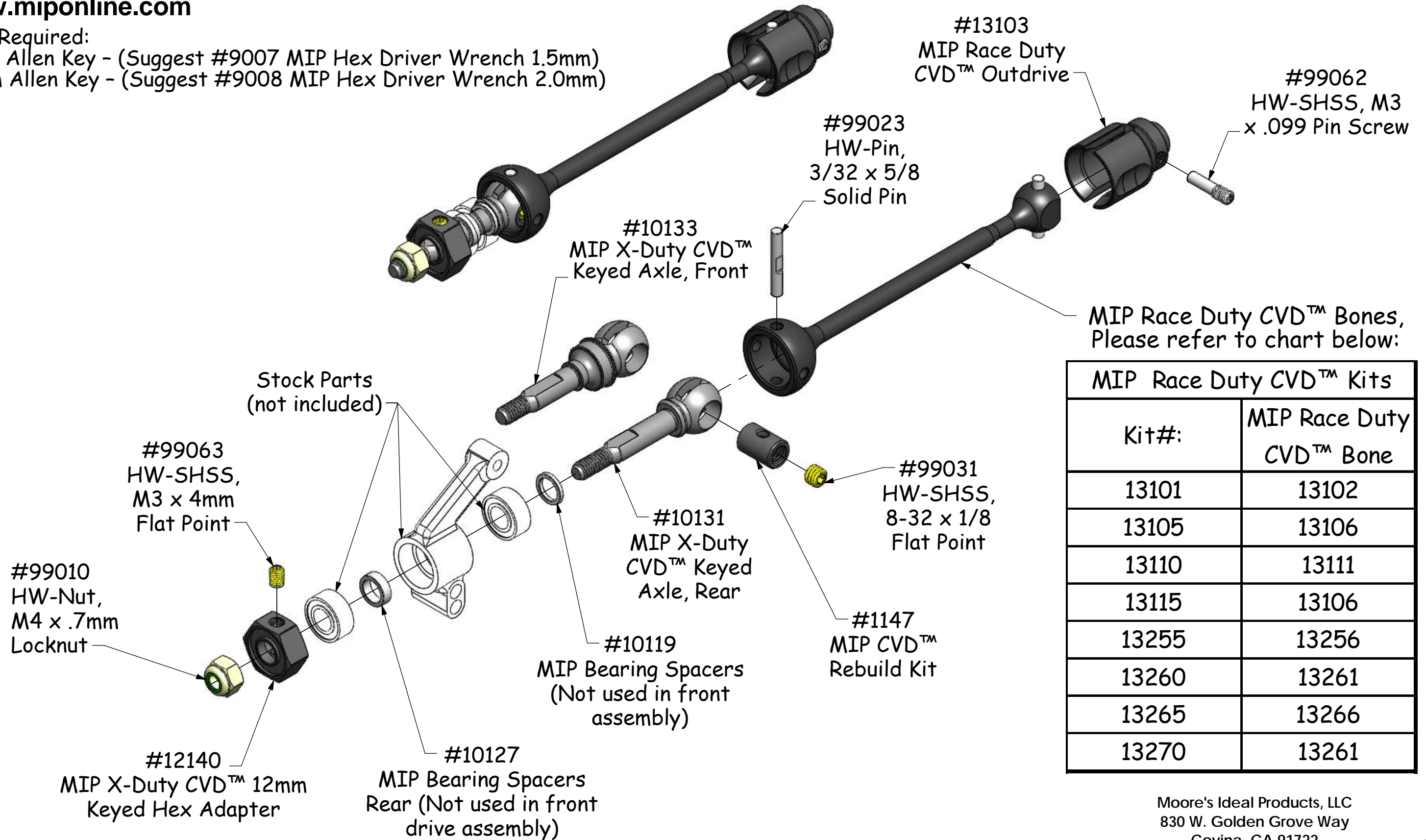
MIP Race Duty CVD™ Kits

(Please read instruction on back before assembly)

Tools Required:

1.5mm Allen Key - (Suggest #9007 MIP Hex Driver Wrench 1.5mm)

2.0mm Allen Key - (Suggest #9008 MIP Hex Driver Wrench 2.0mm)

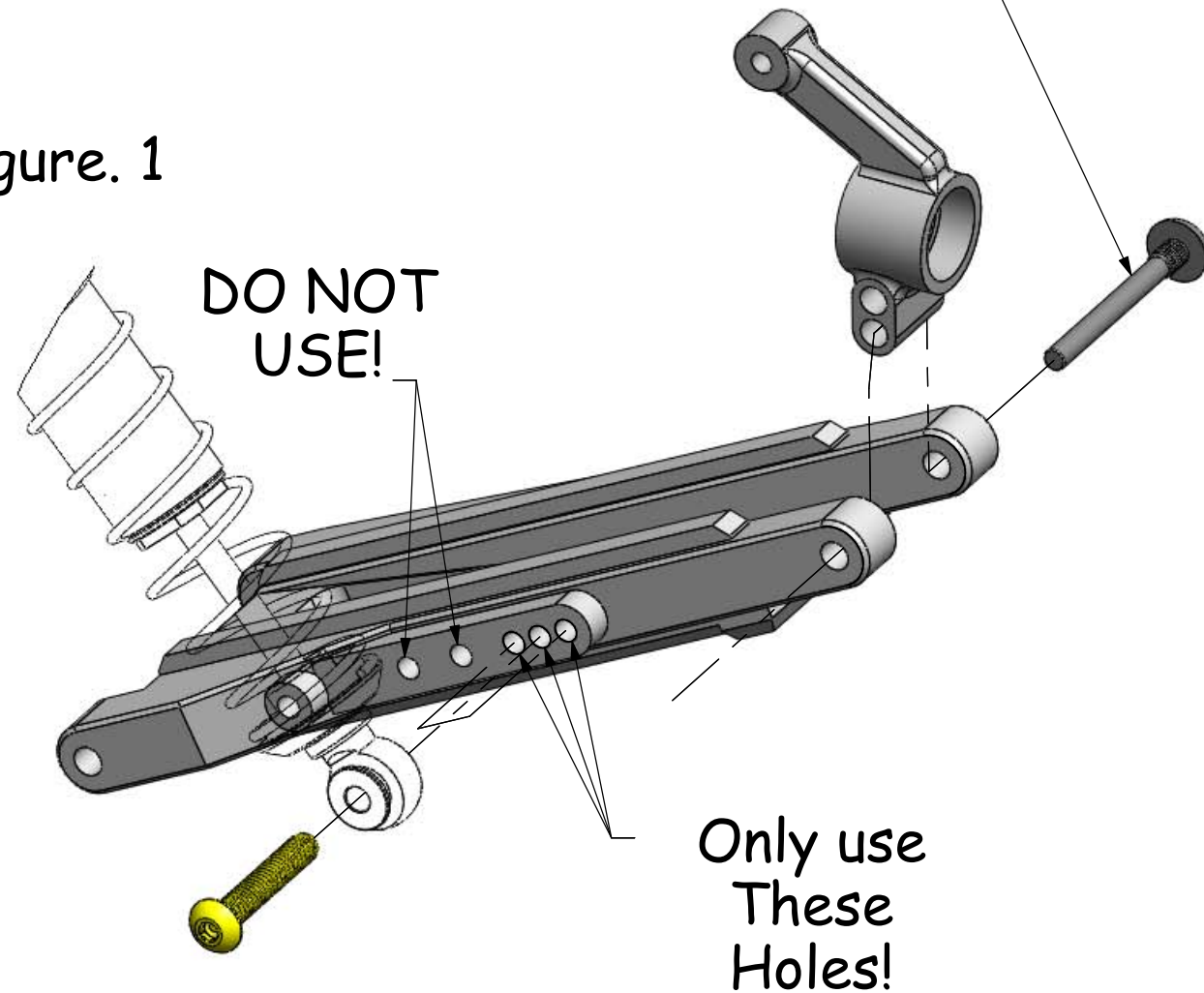


MIP Race Duty CVD™ Kits	
Kit#:	MIP Race Duty CVD™ Bone
13101	13102
13105	13106
13110	13111
13115	13106
13255	13256
13260	13261
13265	13266
13270	13261

Moore's Ideal Products, LLC
 830 W. Golden Grove Way
 Covina, CA 91722

Place screw pin in bottom hole of Hub (Rear Assembly Only)

Figure. 1



- (Front Drive Assembly) The lower shock mounts can only be mounted in the outer 3 holes of the front arm as shown in Fig 1.
- (Rear Drive Assembly) Before installing your new MIP Race Duty CVD™'s you will need to mount the rear hub through the bottom hole of the hub as shown in Fig 1 with your stock Traxxas Hub Screw. The lower shock mount can only be mounted in the outer 3 holes of the rear arm as shown in Fig 1.
- ***Failure Will occur if these positions are not used and will void any warranty from MIP!***

NOTES:

- Keep moving parts greased using the supplied MIP hobby grease, an all-purpose "Moly" Grease, dry wax lube.
- Where set screws are used, coat the threads with "Blue" MIP thread gel before fastening together and allow to set for 1 hour.
- Check that the set screws are "tight" daily. If loose remove, clean, and re-apply "Blue" thread gel.

****IMPORTANT****
Install Shock limiter spacers as shown. If spacers are not installed FAILURE can occur!!!

