

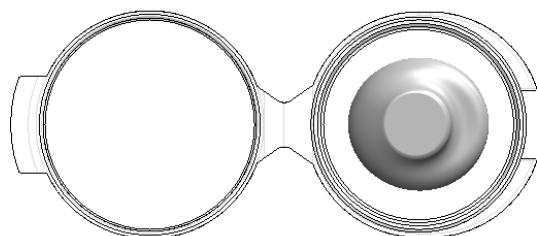


MIP Super Ball Diff Assembly Guide

www.MIPonline.com

3/32" Diff Ball (x14) #16215	5/64" Diff Ball (x6) #16215	Thrust Washer (x2) #16215	Diff Ring (x2) #16215	Diff Spring (x1) #16215	Diff Screw (x1) #16215	T-Nut (x1) #16215	T-Nut Insert (x1) #16215

Ball Bearing 10 x 15 x 4mm (x2) #00-418	Ball Bearing 5 x 8 x 2.5mm (x2) #2012-0111	48T Diff, 65mm (x1) #16211	Male Outdrive, (x1) #16212	Female Outdrive, (x1) #16212



Apply MIP Silicone Diff Grease



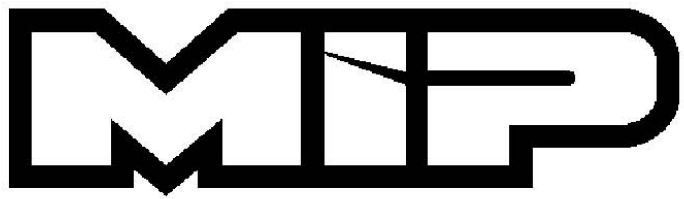
WARNING!!!
 Chemicals in tubes may cause eye/skin irritation and can be harmful if swallowed. If it comes in contact with skin, wash with plenty of soap and water. If in eyes; Rinse with water for fifteen minutes. If irritation persists get medical advice.

For more information & SDS please visit:
www.miponline.com/store/sds.html



Apply MIP Thrust Grease

© 2020
 Moore's Ideal Products, LLC
 830 W. Golden Grove Way
 Covina, CA 91722



MIP Super Ball Diff, Tamiya Blackfoot/ Monster Beetle

www.miponline.com

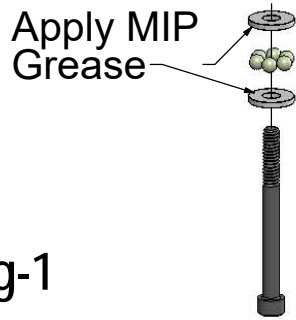


Fig-1

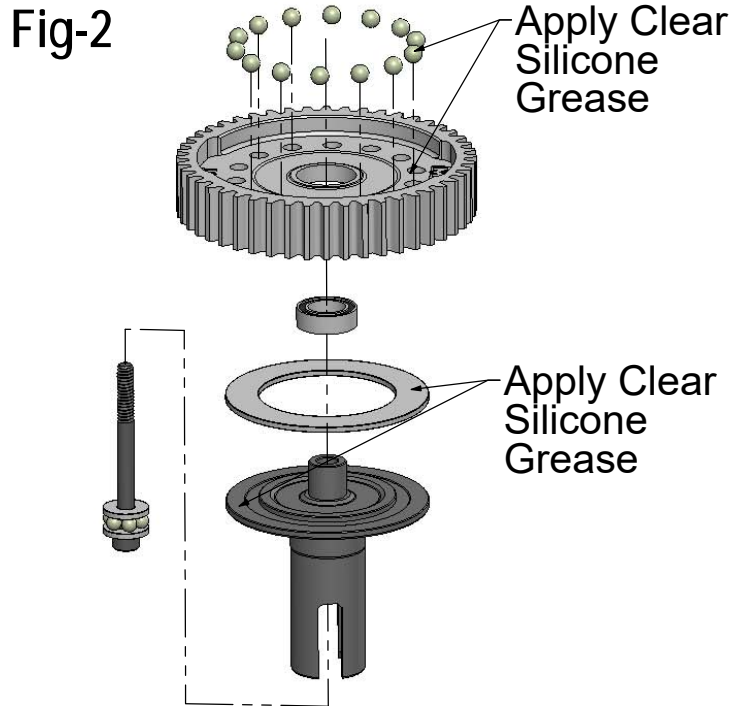


Fig-2

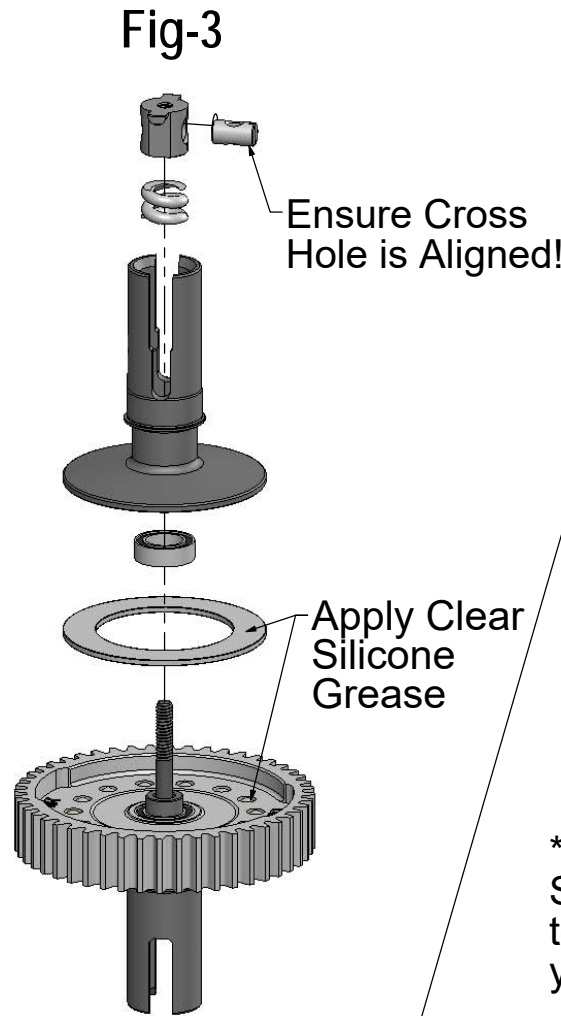
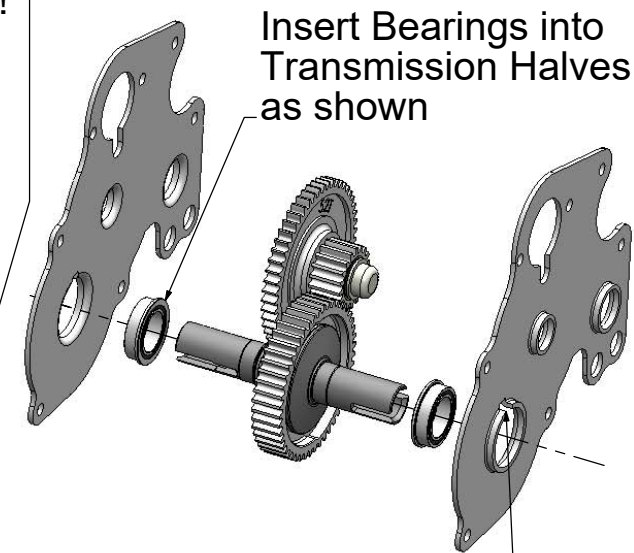
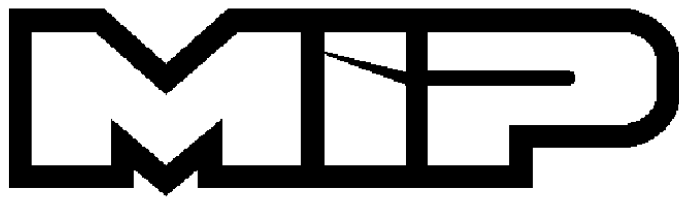


Fig-4



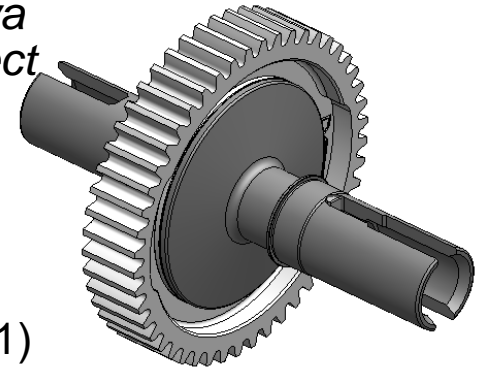
*Use a small amount of RTV Silicone on the keyway holes to prevent dirt from getting into your MIP Super Ball Diff™!

© 2020
Moore's Ideal Products, LLC
830 W. Golden Grove Way
Covina, CA 91722



www.miponline.com

Thank you for Purchasing the MIP Super Ball Diff™ for your Blackfoot and Monster Beetle. MIP is honored to offer the Tamiya community our products. This kit is a direct upgrade for the stock Gear Diff. MIP's Super Ball Diff™ will bring the Blackfoot into the 21st Century without losing that old-school 1980's feel!



1. Apply MIP Grease to the Thrust Washers and 5/64" Thrust Balls liberally (Fig-1)
2. Insert the Screw with Thrust Assembly into the Male Outdrive (Fig-2)
3. Install a Diff Drive Ring on to the Male Outdrive. Use a small amount of Clear Silicone Grease to hold it in place (Fig-2)
4. Slide a 5x8mm Bearing over the nose on the Male Outdrive (Fig-2)
5. Apply a generous amount of Silicone Grease to the face of the Diff Ring and slide the Diff Gear over the 5x8mm Bearing. The Clear Silicone Grease should squeeze through the Diff Ball Holes (Fig-2)
6. Insert the 14 (3/32") Diff Balls into the holes of the Diff Gear and set aside (Fig-2)
7. Install the Diff Drive Ring onto the Female Outdrive. Use a small amount of Clear Silicone Grease to hold it in place (Fig-3)
8. Slide a 5x8mm Bearing into the Female Outdrive. (Fig-3)
9. Using a 2mm Hex Wrench (MIP #9008) hold the Male Outdrive assembly vertical and place the Female Outdrive assembly onto it. (Fig-3)
10. Insert the Diff Spring and Machined Aluminum T-Nut (with Nylon insert) into the Female Outdrive. (Fig-3)
11. As you tighten the Diff Screw, the T-Nut will move closer to the bottom of the slot in the Female Outdrive. Before the Diff Screw "bottoms out" work the Diff back and forth. Once the Diff Screw "bottoms out" back it out 1/4 of a turn and work the Diff again.
12. To check the Diff adjustment, put a wrench into the Male and Female slots. While holding both wrenches in one hand, try to turn the Diff Gear with the other hand. If the Gear slips you will need to tighten the Diff Screw!
13. Install the MIP Super Ball Diff into your vehicle using the supplied 10x15mm Flanged Bearings. Have fun and enjoy your Tamiya vehicle

Note: You can apply a small amount of Silicone to the holes in the Diff Case to keep dirt out!

Visit <http://www.MIPONLINE.com> for more information

Like us on  <http://www.facebook.com/MIPonline>